



An Introduction to The Milton Keynes Academy

www.miltonkeynesacademy.co.uk



An Introduction to The Milton Keynes Academy

CONTENTS

Milton Keynes Academy is part of the Woughton Group of schools where....

“We will achieve success on our learning journey with the support and guidance of all adults sharing responsibility under the umbrella of the Woughton community.”

Why your child will succeed at The Milton Keynes Academy	4/5
Admissions: Who can go to the Academy?	6/7
Why the Academy is special	8/9
Curriculum: There are many paths to success	10/11
Moving up to the Academy	12/13
Brilliant facilities	14/15
The Enterprise Hub and your involvement	16/17
About Edge	18



WHY YOUR CHILD WILL SUCCEED AT THE MILTON KEYNES ACADEMY

We believe in the power of learning to unlock our unique potential to be the best that we can be.

Our way is:

- to respect ourselves and each other
- to make a positive contribution
- to believe anything is possible, when we work hard.

There are many extremely good reasons why your son or daughter will thrive at the Academy.

For a start, there is huge emphasis on high academic and personal achievement, with extra support for talented and gifted students, and those needing extra help.

Your child will be able to work in an inspiring specially designed state-of-the-art environment, and will have the advantage of learning in many totally different ways – not done anywhere else in Milton Keynes. This includes having more hours of study, having different term times, taking exams earlier and benefiting from other exciting new approaches to

teaching. More details about all these are included further in this booklet.

The Academy also has a special emphasis on enterprise, which means your child will learn essential skills for future life such as team work, problem solving and creative thinking.

Working closely with the Academy's sponsor, Edge, we have created a brilliant place to study, develop and have fun. I guarantee that your child will be given all the skills and



encouragement they will need to succeed.

Lorna Caldicott,
Principal of The Milton Keynes
Academy



The Milton Keynes Academy is the first choice for parents wanting the very best for their children.



ADMISSIONS: WHO CAN GO TO THE ACADEMY?

Our Mission:
Everyone Achieves

The Milton Keynes Academy considers all applications for places. Our Admissions Policy and catchment area can be found on our website.

In the autumn you will receive a letter from Milton Keynes Council asking you to apply for a secondary school place for your child. This application form needs to be completed and returned to the Council by the closing date.

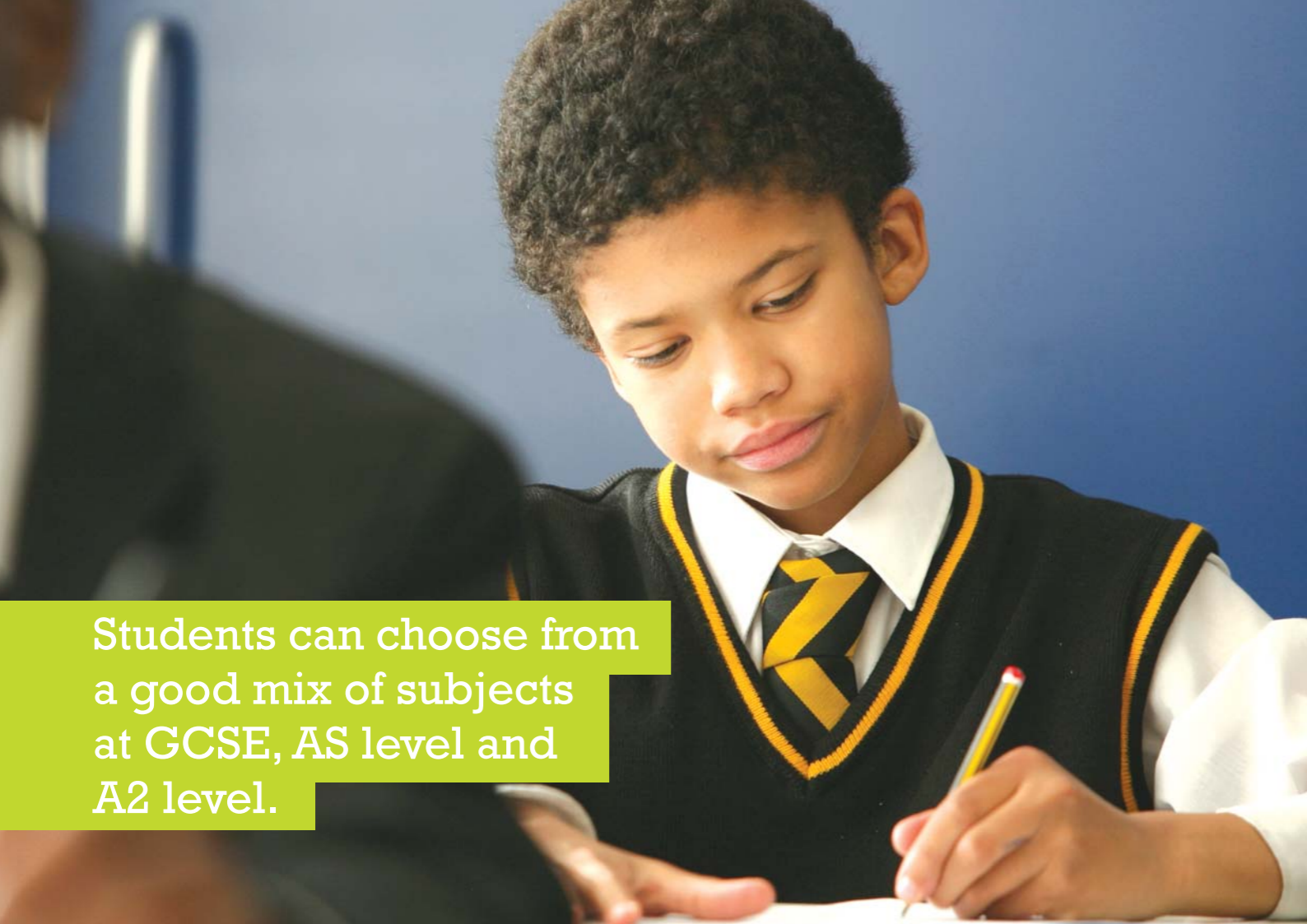
Places will then be allocated, and parents will be informed in March.

WHY THE ACADEMY IS SPECIAL

- Students have a 28 hour week (most schools have 25 hours). This means that your child will have more learning time and will therefore make faster progress in all subjects.
- We have organised the school year to support student learning and assessment. This means six-week terms with a shorter summer holiday and a two-week break in the autumn.
- We spend extra time on Maths and English. Every day students spend the equivalent of an hour each on literacy and numeracy.
- Students start key stage 4 a year earlier in year 9. This means that your child will have an extra year to study GCSEs, and therefore will achieve better results in their exams.
- Children are encouraged to stay on at school to do their homework and join in extra activities, and we provide a free snack.
- We have excellent food facilities, with a range of tasty and nutritious dishes on offer, cooked on site by our own staff.
- There are sufficient computers for every child to use in every classroom. The library has many books.
- The school is split into various subject 'villages' each with its own identity. We have state of the art specialist facilities for subjects such as Science, Art and Design and Performing Arts.
- There is a special Enterprise Hub, and we work with the support of local employers. We encourage children to learn skills which would help them set up a business of their own.



We use our Academy independence to do things differently – and do things better.



Students can choose from a good mix of subjects at GCSE, AS level and A2 level.

CURRICULUM: THERE ARE MANY PATHS TO SUCCESS

The Academy has superb facilities so that students can work well in bright, spacious and well-equipped areas for all subjects.

We offer our students a broad and balanced curriculum that suits their needs. We spend extra time on English and Maths as doing well in these subjects is crucial for the future success of young people.

Enterprise skills are taught in every subject, so that lessons relate to the world of work. There is also an emphasis on practical classroom work - 'learning by doing'.

It's important to have the qualifications and skills necessary to take students where they want to go in life. This might mean having qualifications to get a good university place, or to gain more practical experience and qualifications before starting work.

From year 9, our students begin their GCSEs. There is a huge choice of subjects to study alongside the 'core' of English, Maths, Science and History or Geography. We offer mostly GCSEs with some more vocationally based BTECs.

At 16 years old, our students progress to our 6th form. This is called Studio 6. We offer many and varied courses in Studio 6 to suit students of all levels.

Studio 6 has its own prospectus that can be downloaded at www.miltonkeynesacademy.co.uk

MOVING UP TO THE ACADEMY

We learn about each child's strengths and weaknesses and make arrangements for extra help and support if they are talented or gifted, or if they need special help in other ways.

Behaviour: Very high standards of behaviour are expected, and poor or disruptive behaviour is not tolerated.

We work on a system of reward to encourage effort, attainment and excellence. We expect students to work hard and make progress.

We have created a happy learning environment, and do all we can to ensure that students enjoy their work and find lessons interesting and absorbing. In turn, this stops classroom disruptions caused through boredom.

Uniform: Our uniform is smart and affordable and was designed after talking to students about what they would like.

Boys and girls wear a black blazer, black trousers, a white shirt, tie and black jumper. They also have an Academy backpack and a P.E. kit.



We have created a
happy learning
environment.



The Academy offers students an environment where they feel safe, secure and valued.

BRILLIANT FACILITIES

The building has been designed to cater for students with difficulties and disabilities – allowing access for all. It has been cleverly designed to offer great facilities. These include:

- Seven science laboratories.
- A food technology hall.
- Design and technology studios.
- Six music practice rooms.
- Dance studio, arts rooms and two drama halls.
- A film and TV recording studio and a music recording studio.
- A rugby pitch, two full size football pitches, five-a-side football pitches and a cricket oval.
- An athletics track and facilities for high jump, triple jump, shot-put and javelin.
- Huge indoor sports gym and basketball and tennis courts.
- Language laboratories.
- Science and arts gardens, and an outside performance area.
- Restaurant and café serving delicious food, plus an outdoor dining area.

THE ENTERPRISE HUB AND YOUR INVOLVEMENT

The Academy has an 'enterprise' specialism, which develops the students' ability to participate, collaborate, contribute and perform.

The Enterprise Hub has lots of different facilities including meeting rooms and open plan work areas. Food and drinks are also available, and there is a fantastic terrace overlooking the city.

In addition to being used by students, the Enterprise Hub is also used by business people and members of the local community for special events and meetings.

Your Involvement

We expect parents to encourage their child to succeed at the Academy, and are always happy to talk about any particular issues that might be affecting your child's learning and time at school. We will:

- Provide a report every term about your child's progress.
- Have progress evenings for you to talk to subject teachers every term.
- Send you regular newsletters.
- Support a parents' group and discussion forum.



Business &
Enterprise



Our Mission:
Everyone Achieves

FINDING OUT MORE

You can find out lots more information about the Academy by looking at our website:

www.miltonkeynesacademy.co.uk

You can also make an appointment to have a chat with Mrs Caldicott by emailing her at:

info@miltonkeynesacademy.co.uk

The Milton Keynes Academy
Fulwoods Drive
Leadenhall
Milton Keynes
MK6 5LA

Tel: 01908 341700

How to find us

